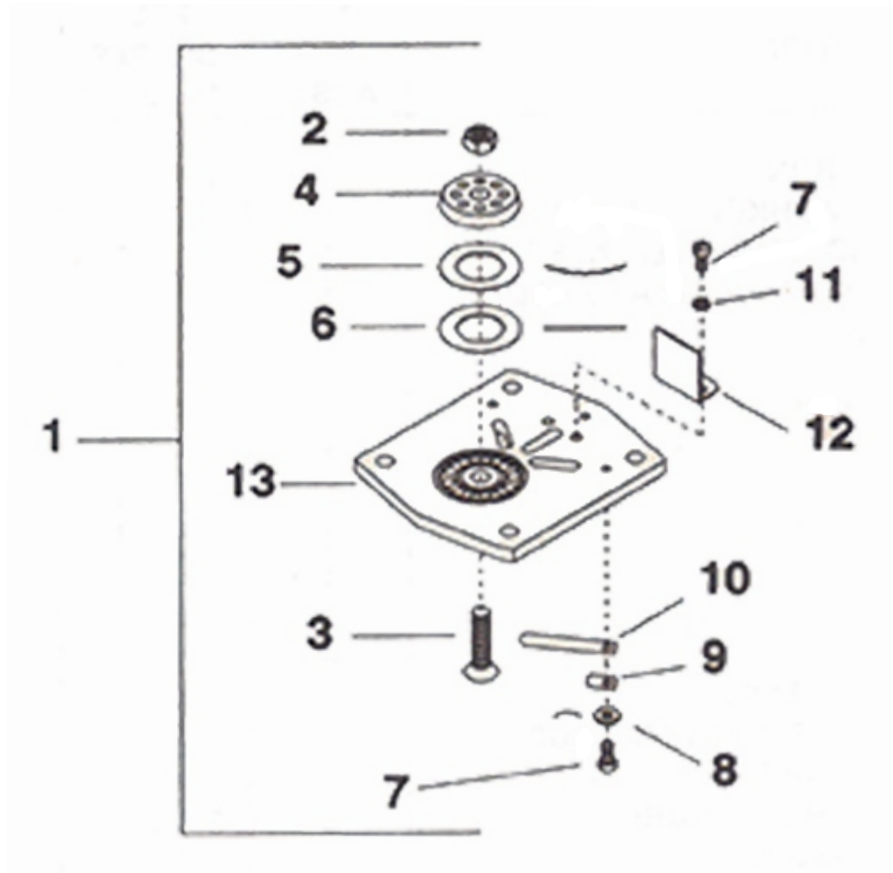


3. HIGH PRESSURE VALVE ASSEMBLY - MODEL 2540



All manufacturer's names, numbers, photos, product description and/or part numbers are used for reference purposes only & it is not implied that any part listed is the product of these manufacturers. Since Approvement are made from time to time, the illustration and specifications are subject to change without notice.

3. HIGH PRESSURE VALVE ASSEMBLY - MODEL 2540

| No. | Description | Ref Part No. | QTY |
|------|--|--------------|-----|
| 3-1 | Assembly, Valve High Pressure | 32229817 | 1 |
| 3-2 | – Nut Whiz Lock 7/16-14 Hex | 97166946 | 1 |
| 3-3 | – Bolt, Discharge Valve | 32223927 | 1 |
| 3-4 | – Plate, Stop | 32176703 | 1 |
| 3-5 | – Spring, Discharge Valve | 30221576 | 1 |
| 3-6 | – Plate, Discharge Valve | 30215941 | 1 |
| 3-7 | – Screw, Fillister Head -1/4-20 X 3/8" | 32035511 | 5 |
| 3-8 | – Washer, Belleville - 1/4" | 32217382 | 3 |
| 3-9 | – Retainer, Finger Valve | 32228306 | 3 |
| 3-10 | – Valve Finger | 30220115 | 3 |
| 3-11 | – Lockwasher - Spring 1/4" | 32035479 | 2 |
| 3-12 | – Diffuser | 32224156 | 1 |
| 3-13 | – Plate, Seat - High Pressure | 32228363 | 1 |

All manufacturer's names, numbers, photos, product description and/or part numbers are used for reference purposes only & it is not implied that any part listed is the product of these manufacturers. Since improvement are made from time to time, the illustration and specifications are subject to change without notice.